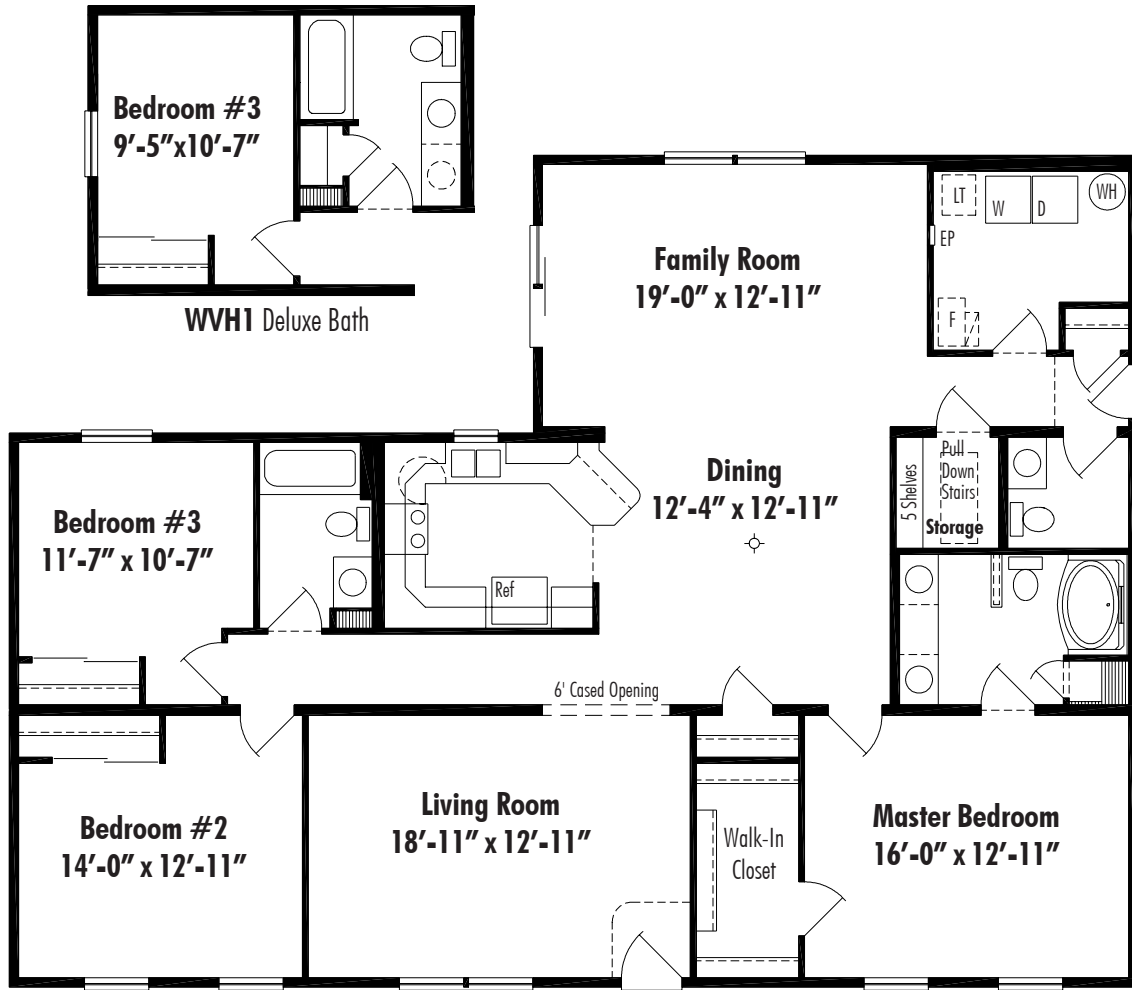


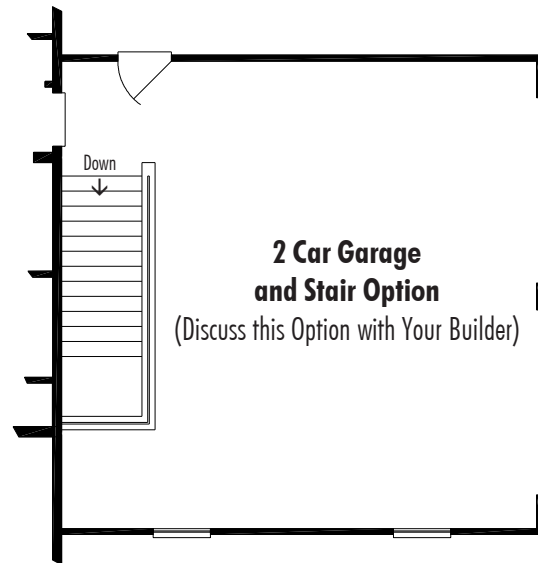
Waverly

Waverly Hall Bath Option

Available on Plan A

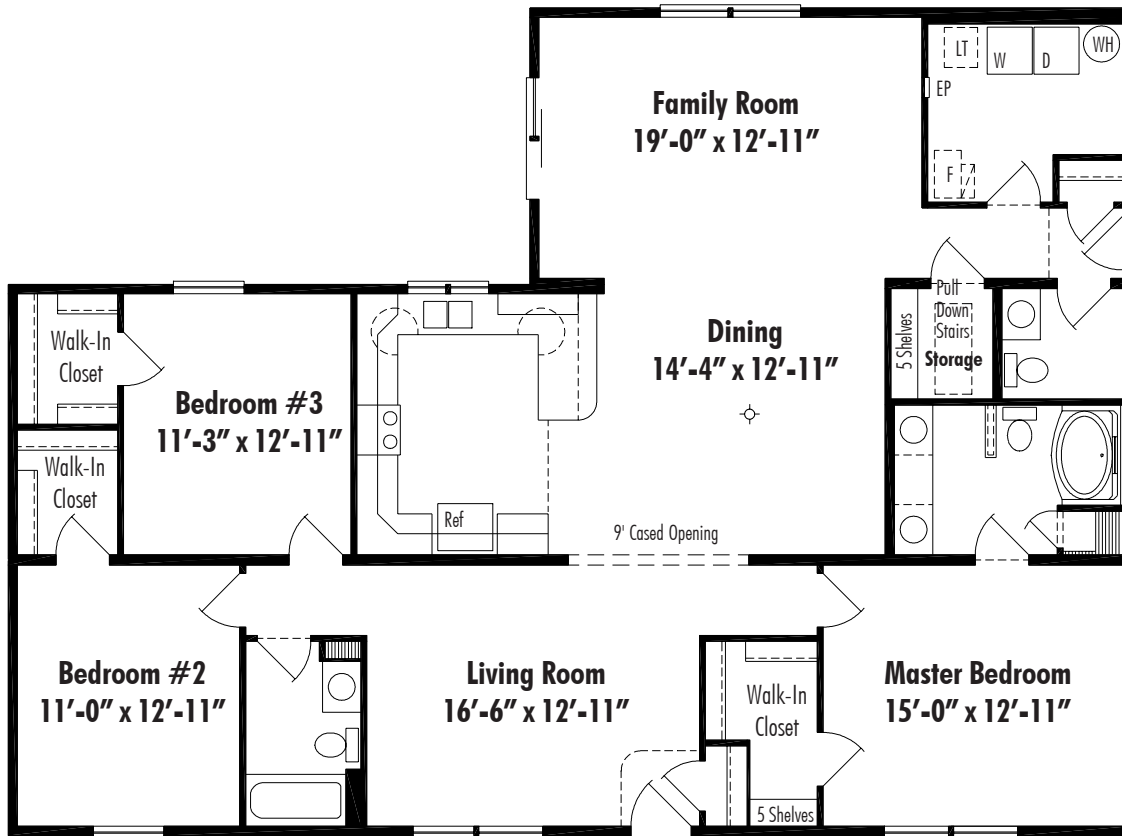


Waverly A.56 Crawl Space 41' x 56', 1941 Sq. Ft. Living Area



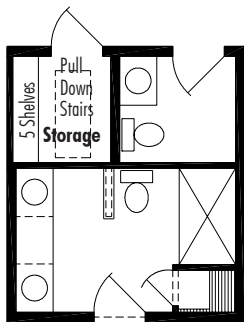
Available on Waverly A & B

Waverly

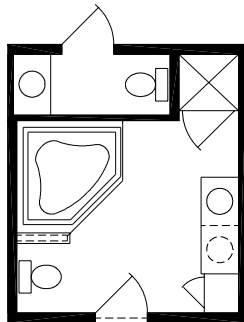


Waverly B.56 Crawl Space 41' x 56', 1941 Sq. Ft. Living Area

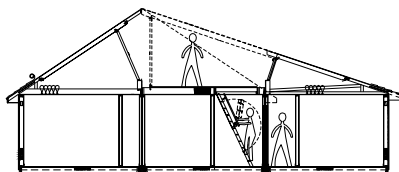
Waverly Master Bath Options



WVB1 5' Shower



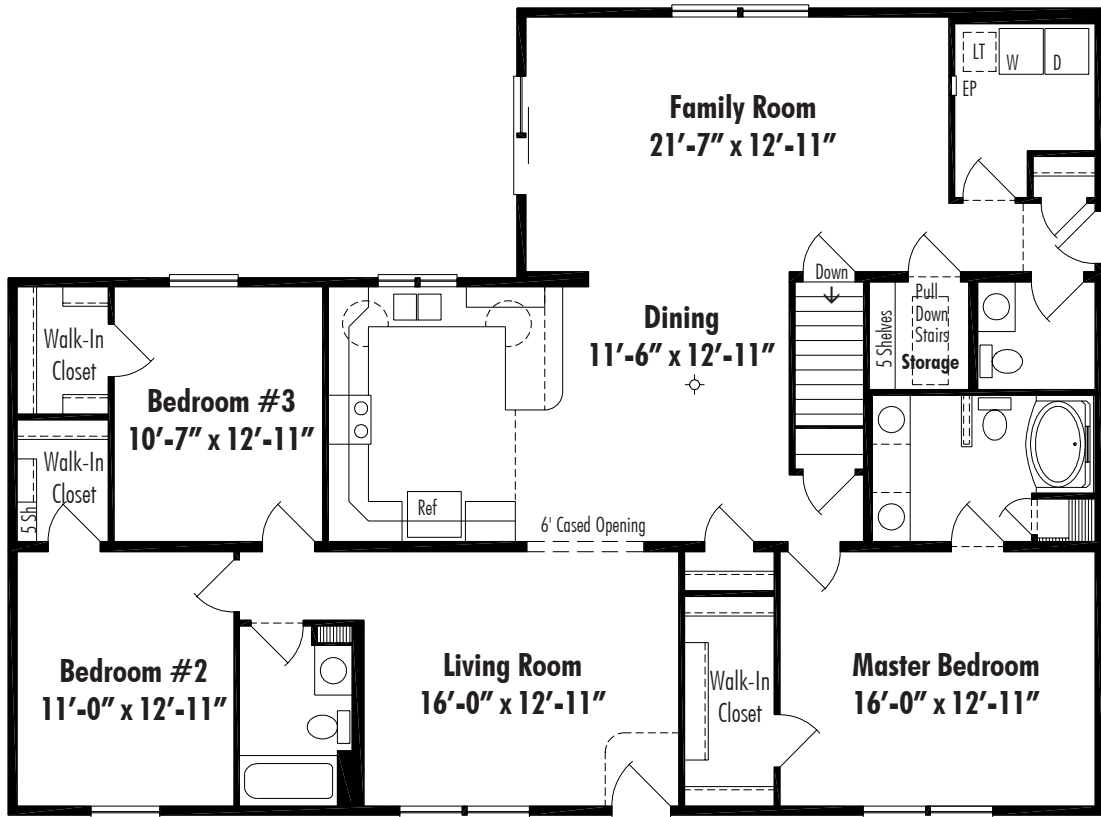
WVB2 Roman Tub and Shower
(Pull Down Stairs Relocated to Master Bedroom Closet)



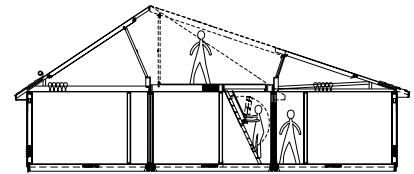
Storage Area on Waverly A & B



Waverly



Waverly C.56 Basement 41' x 56', 1941 Sq. Ft. Living Area

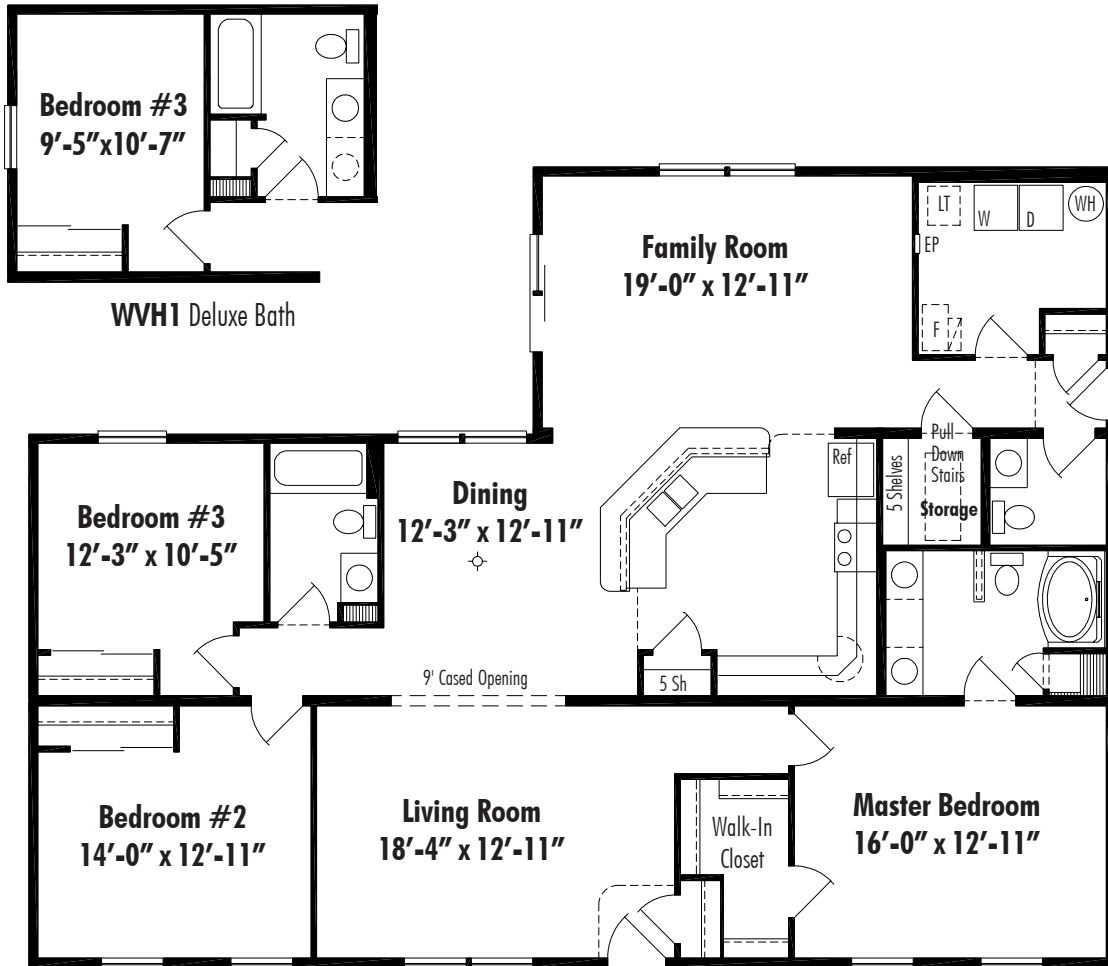


Storage Area on Waverly C & D

Waverly

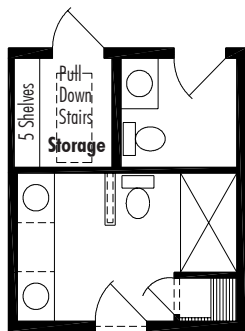
Waverly Hall Bath Option

Available on Plan D

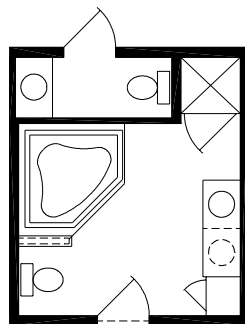


Waverly D.56 Crawl Space 41' x 56', 1941 Sq. Ft. Living Area

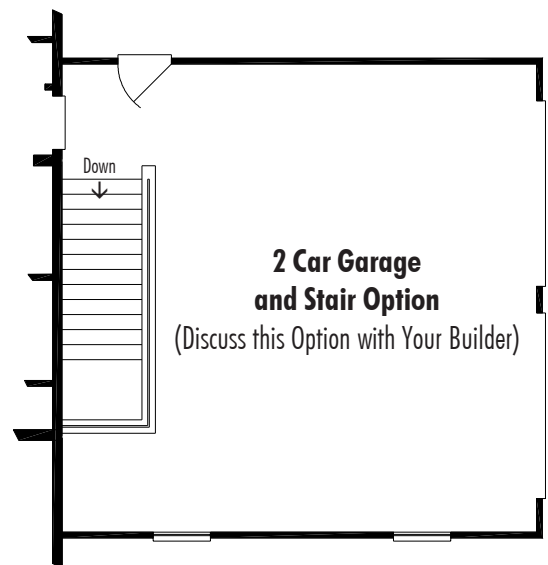
Waverly Master Bath Options



WVB1 5' Shower



WVB2 Roman Tub and Shower
(Pull Down Stairs Relocated to Master Bedroom Closet)



Available on Waverly D Only

Waverly Included Features

Floors

2 x 10 Floor Joist, 16" on Center
¾" OSB Tongue and Groove Subfloor

Exterior Walls

2 x 6 Exterior Walls, 16" on Center

Exterior

3/8" Sub-Siding on Full Perimeter on Each
Module Including Center Marriage Wall
DuPont Tyvek® House Wrap
Low Maintenance Vinyl Siding
Low Maintenance Vinyl Soffit Roof Overhang
Low Maintenance Vinyl Gable Roof Overhang
Low Maintenance Vinyl Shutters Per Plan
Metal Clad Insulated Exterior Doors
(No Glass - Primed)
Andersen Double Hung Tilt Windows with Low E Toe
Kick Wall Registers in Kitchen, Utility and Baths

High Performance Glass.
Andersen Gliding Glass Door with Low E
High Performance Glass

Roof

8/12 Front Pitch with 4/12 Rear Pitch Roof Truss
System, 24" on Center
360 Sq. Ft. of Attic Storage Area with ¾" OSB Tongue
and Groove Subfloor
Pull Down Stairs to Attic Storage
7/16" OSB Roof Sheathing
Shingle Underlayment Felt Paper
Seal-Down Fiberglass Asphalt Roof Shingles (25 Year)
16" Eaves Overhang

Insulation

R-38 Ceiling Insulation - 12" Fiberglass Batt
R-30 Ceiling Insulation - 8" Fiberglass Batt (Storage Area)
R-19 Insulation in Exterior Walls - 6" Fiberglass Batt
R-13 Floor Insulation - 3 ½" Fiberglass Batt

Interior

8' Ceilings
2 x 4 Interior Walls, 24" on Center
2 x 3 Center Marriage Wall, 16" on Center, on Each Side
½" Finished Drywall with Smooth Finish on Walls
and Ceilings
All Interior Drywall Surfaces are Primed with White
Latex Paint
Birch Veneer Interior Doors
Stained Poplar Interior Trim
Stained Poplar Window Sills
Ventilated Shelving in Closets

Floor Coverings

Wall-to-Wall Carpeting with ½" Pad in Living Room,
Dining Room, Bedrooms and Hall
Floor Vinyl in Kitchen, Baths, Utility and Entry Foyer

Kitchen Features

HAAS Oak Kitchen Cabinets
Laminate Counter Top
8" Deep Stainless Steel Sink
Kohler Single Lever Faucet with Spray
Range Hood

Bathroom Features

HAAS Oak Bathroom Vanities
Laminate Vanity Top with Ceramic Bowl
Medicine Cabinet or Mirror (Per Plan)
Kohler Fiberglass Tub and Shower Unit
Kohler Single Lever Lavatory Faucet

Heating

Prepped For Forced Air Heating
Toe Kick Wall Registers in Kitchen and Baths

Plumbing

Plumb-Pex® Water Line System
PVC Waste lines
Plumbing Hook-Ups for Washer in Utility Room
Frost Proof Outside Water Faucets (2)
50 Gallon Electric Water Heater

Electric

All Electric Work in Accordance with National
Electric Code
200 AMP Electric Circuit Breaker Service
Smoke Alarms in Each Bedroom
Door Chimes
Interior and Exterior Lighting Fixtures
Bedroom Ceiling Lights
Paddle Fan Prep in Dining Room and Bedrooms (35# Cap.)
Recess Can Lights in Kitchen
Fan/Light Combination in all Baths
Exterior Weatherproof Electric Outlets in Front
and Rear
220 Volt Outlet for Dryer in Utility Room