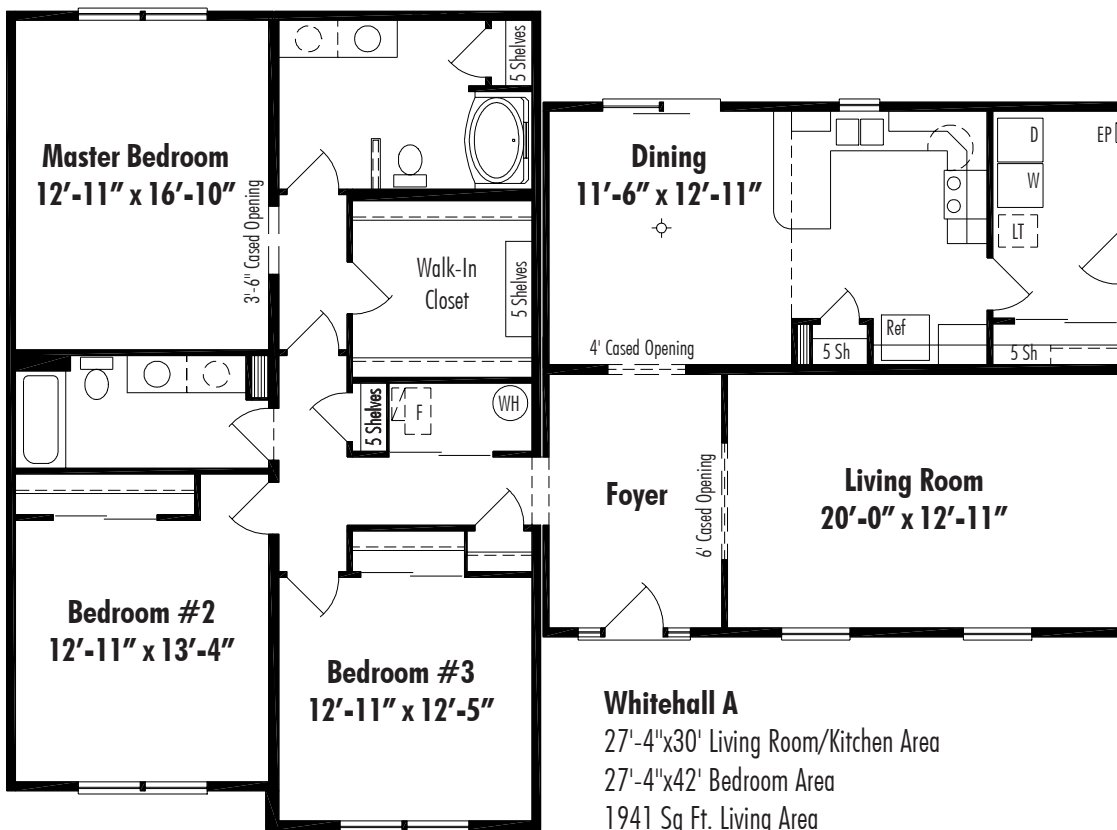
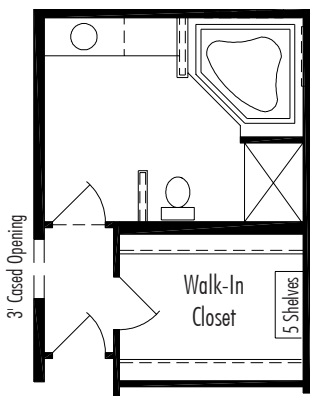


# Whitehall

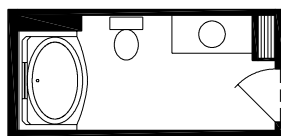


## Whitehall Master Bath Option



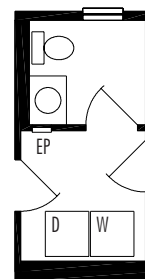
**WHB2** Deluxe Bath

## Whitehall A Hall Bath Option



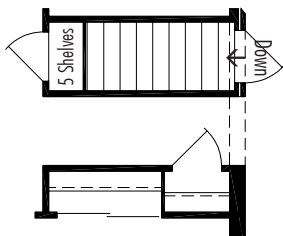
**WHB1** Garden Tub

## Whitehall Utility Option

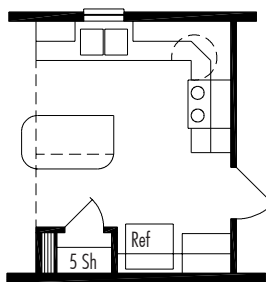


**WHU1** Utility with Half Bath

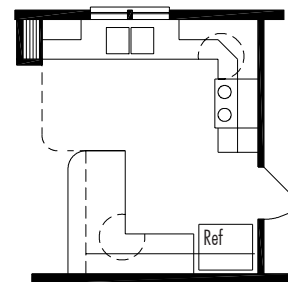
## Whitehall Stairway Option



## Whitehall A Kitchen Options



**B** Island Kitchen

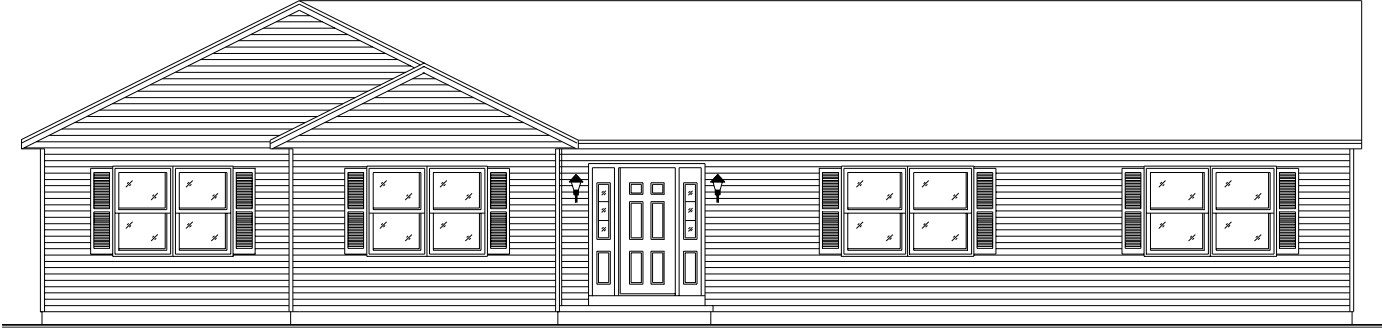


**C** Deluxe Kitchen

# Whitehall Front Elevations



Plans A & B



Plans C, D, E & F

# Whitehall Included Features

## Floors

2 x 10 Floor Joist, 16" on Center  
¾" OSB Tongue and Groove Subfloor

## Exterior Walls

2 x 6 Exterior Walls, 16" on Center

## Exterior

3/8" Sub-Siding on Full Perimeter on Each  
Module Including Center Marriage Wall  
DuPont Tyvek® House Wrap  
Low Maintenance Vinyl Siding  
Low Maintenance Vinyl Soffit Roof Overhang  
Low Maintenance Vinyl Gable Roof Overhang  
Low Maintenance Vinyl Shutters Per Plan  
Metal Clad Insulated Exterior Doors  
(No Glass - Primed)  
Double Side Light at Front Door  
Andersen Double Hung Tilt Windows with  
Low E High Performance Glass  
Andersen Gliding Glass Door with Low E  
High Performance Glass

## Roof

6/12 Pitch Roof Truss System, 24" on Center  
7/16" OSB Roof Sheathing  
Shingle Underlayment Felt Paper  
Seal-Down Fiberglass Asphalt Roof Shingles (25 Year)  
11" Eaves Overhang

## Insulation

R-38 Ceiling Insulation - 12" Fiberglass Batt  
R-19 Insulation in Exterior Walls - 6" Fiberglass Batt  
R-13 Floor Insulation - 3 ½" Fiberglass Batt

## Interior

8' Ceilings  
2 x 4 Interior Walls, 24" on Center  
2 x 3 Center Marriage Wall, 16" on Center, on Each Side  
½" Finished Drywall with Smooth Finish on Walls  
and Ceilings  
All Interior Drywall Surfaces are Primed with White  
Latex Paint  
Birch Veneer Interior Doors  
Stained Poplar Interior Trim  
Stained Poplar Window Sills  
Ventilated Shelving in Closets

## Floor Coverings

Wall-to-Wall Carpeting with ½" Pad in Living Room,  
Family Room, Dining Room, Bedrooms and Hall  
Floor Vinyl in Kitchen, Baths, Utility and Entry Foyer

## Kitchen Features

HAAS Oak Kitchen Cabinets  
Laminate Counter Top  
8" Deep Stainless Steel Sink  
Kohler Single Lever Faucet with Spray  
Range Hood

## Bathroom Features

HAAS Oak Bathroom Vanities  
Laminate Vanity Top with Ceramic Bowl  
Medicine Cabinet or Mirror (Per Plan)  
Kohler Fiberglass Tub and Shower Unit  
Kohler Single Lever Lavatory Faucet

## Heating

Prepped For Forced Air Heating  
Toe Kick Wall Registers in Kitchen and Baths

## Plumbing

Plum-Pex® Water Line System  
PVC Waste lines  
Plumbing Hook-Ups for Washer in Utility Room  
Frost Proof Outside Water Faucets (2)  
50 Gallon Electric Water Heater

## Electric

All Electric Work in Accordance with National  
Electric Code  
200 AMP Electric Circuit Breaker Service  
Smoke Alarms in Each Bedroom  
Door Chimes  
Interior and Exterior Lighting Fixtures  
Bedroom Ceiling Lights  
Paddle Fan Prep in Dining Room and Bedrooms  
Recess Can Lights in Kitchen  
Fan/Light Combination in all Baths  
Exterior Weatherproof Electric Outlets in Front  
and Rear  
220 Volt Outlet for Dryer in Utility Room